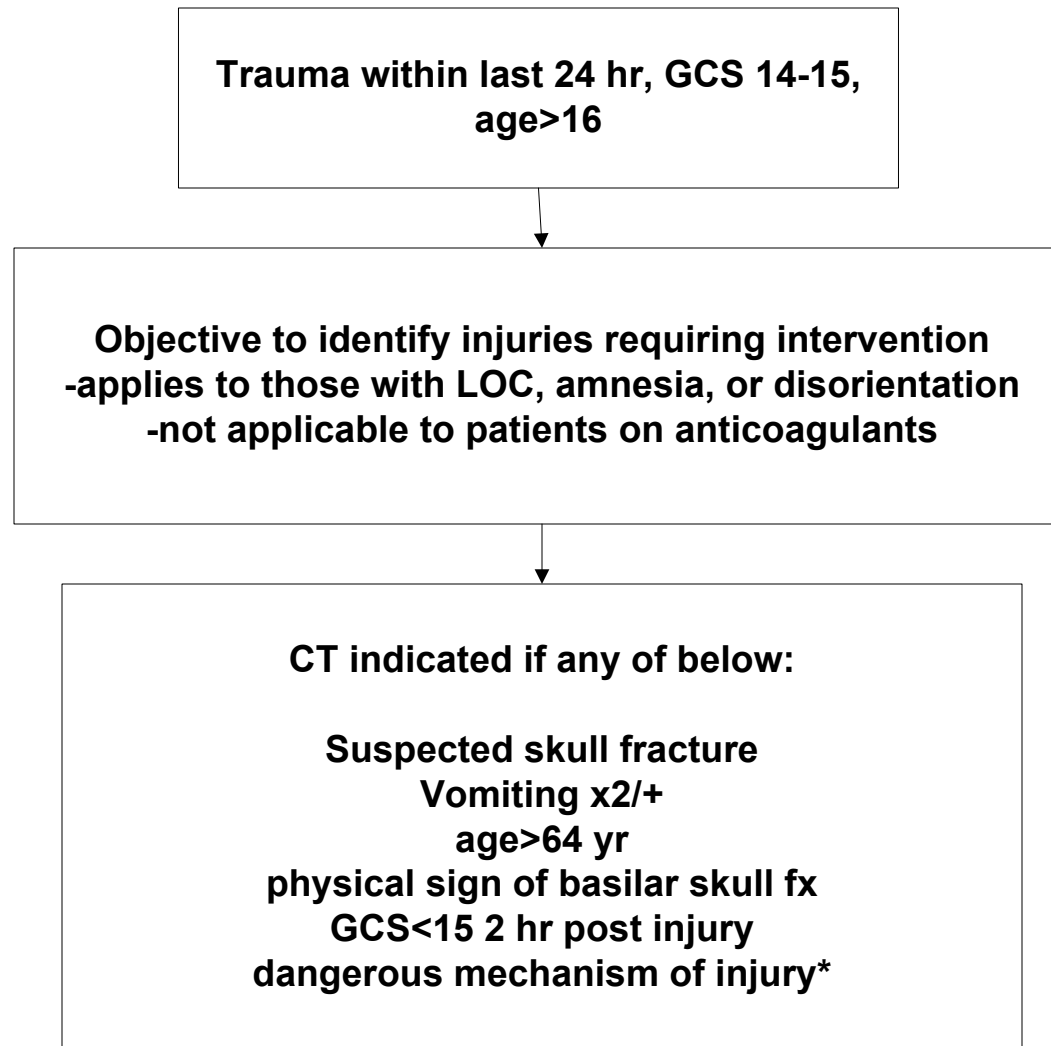


Minor Blunt Head Trauma Algorithm



* Dangerous mechanism defined as:
pedestrian struck by motor vehicle,
occupant ejected from motor vehicle,
fall from height >3 feet or 5 stairs

Stiell IG et al. The Canadian CT Head Rule for Patients with Minor Head Injury. Lancet. 2001 May 5;357(9266):1391-6

This guideline was ratified by the emergency department faculty at Maine Medical Center in February 2010. It reflects our expert opinion and is not necessarily applicable to all institutions. It is intended to be a reference for clinicians caring for patients and is not intended to replace providers' clinical judgment.

Produced by: William Gregorie, MD, Megan Fix, MD, and Jeff Holmes, MD